



# Rosedale Park News

Serving a Friendly Neighborhood

Volume LXVII

Rosedale Park • Detroit, Michigan 48223

December 2010 • Number 9

## All Families are Invited to Attend our 5th Annual HOLIDAY PANCAKE BREAKFAST

**Host: Rosedale and North Rosedale**

This will be a great opportunity to meet and greet your neighbors and mingle with old friends.

**SATURDAY -  
DECEMBER 4, 2010**

**9-11 AM**  
**COST: \$3.00 per person**



**LOOK FOR UPDATES ON THE  
UPCOMING RPIA ANNUAL  
BANQUET IN THE  
JANUARY ISSUE!**

**ANNUAL BREAKFAST ON DEC. 4  
NORTH ROSEDALE  
COMMUNITY CENTER  
18445 SCARSDALE,  
BETWEEN GLASTONBURY AND AVON**

### IN THIS ISSUE

President's Message .....	2
Block Captains' Corner .....	3
Phoneathon a Success! .....	4
RPIA Holiday Breakfast .....	5
RPIA Board Meeting Minutes .....	6
RPIA General Membership Meeting Minutes .....	7
GRDC Update .....	8
RPIA Congratulates Graduates .....	9
I am a Renter Too! .....	10
Rosedale Recycles .....	11
Lost Cat Found! .....	14



## President's Message

### Greetings:

First, a great big thank you for all those who participated in the recent efforts to obtain additional dues payments!! Their efforts paid off and additional dues payments from residents were obtained. The effort was done via a phone-a-thon with members making pick-ups to expedite receipt of payments.

This approach came from one of the concerned R.P.I.A. constituency. Their choice to get involved to help resolve an issue facing the association's ability to provide a community service, proved to be successful. It showed what can be accomplished when we get involved.

There are many services and community efforts supported by the R.P.I.A that you can become involved with. Why not contact a board member and become engaged in a community service? Another R.P.I.A. effort you can support is the Radio Patrol. There is always an open patrol shift. It only requires 2 hours of your time per month. But the comfort it provides to you and your neighbors, knowing someone is watching out for them, is immeasurable.

### WHAT YOU MISSED!

At the general membership meeting in November, MDOT came and presented information regarding the changes that will occur to the Southfield Freeway, M-39. They also shared what the effect on the traffic flow will be during the renovation with the shutdown of the Southfield Freeway beginning in January 2011.

Dale Thompson, talked about 501 non-profit organizations, the advantages and restrictions associated with being classified as such.

Jeremy Orr of G.R.D.C. announced a new Crime Alert initiative that will occur. Look for more information to come regarding that effort and how you can participate and receive updates on crime in our community.

### NEXT UP!

The next opportunity we have to get together, as neighbors and a community, is at the Annual Pancake Breakfast, December 4, 2010 at the North Rosedale Community House. Mark your calendar to come out and meet your neighbors.

Be sure to bring your children as Santa always visits us and has treats for the children. Everyone has a great time.

Following the Annual Pancake Breakfast, we next have an opportunity to meet as neighbors and a community, at the Annual R.P.I.A. Banquet, January 28, 2011 at the North Rosedale Community House. This event closes out the 2010 fiscal year for the Association and is the time when the new R.P.I.A. Officers and Board are sworn in to serve in year 2011. The food is great, the music smooth and for those who like to dance, opportunity abounds.

### Challenges of the Month

- If you haven't yet paid your 2010 dues, why not take a moment and send it in today.
- Find a community activity you enjoy and to which you are willing to lend your time and effort.
- Mark your calendars and come out in support of the Annual Pancake Breakfast and the Annual Banquet.

Debbie

## Rosedale Park News Advertising Rates

Did you know that ads in the *Rosedale Park News* reach over 800 households in and around Rosedale Park for a very reasonable cost?

Ad Type	Cost/month <sup>†</sup>
Personal classified*	Free for RPIA members!
Business card	\$24 <sup>†</sup>
Quarter page	\$60 <sup>†</sup>
Half page	\$120 <sup>†</sup>

<sup>†</sup> An additional, one-time setup fee will be charged for all new ads and revisions to existing ads. Fee varies according to complexity of setup. Copy for new and revised ads is due no later than the 1st of the month prior to month of publication.

\* For individuals and young people only—not for adult-owned businesses; must be text only and 50 words or fewer.

For more information or to place an ad, please contact Rosedale Park News advertising coordinator Darryl Brown at 313-574-0410. If you prefer, you can send an email to Darryl at [advertiserpia@aol.com](mailto:advertiserpia@aol.com).

# Block Captains' Corner

## Happy Fall Everyone!!

*By Molly Ekhund-Easley*

The Holiday Season Continues! Hello to all of you who live in this wonderful community we call "The Park". Halloween has come and gone, and so have Angels' Night and all the apprehension that we felt around that time. It's now time to look ahead to the upcoming Thanksgiving season. Thanksgiving is coming, but we should give thanks every day because we have been blessed to see another year coming to a close. We need to continue with the mindset of watching out for one another and caring about where we live. We need to stay informed about what goes on around us and in other communities. We can do this by coming to neighborhood meetings, safety meetings and other formats such as Town Hall gatherings.

Coming up is the "Pancake breakfast" for which we've had a great turnout every year and each year bigger than the previous one. Let's continue this tradition of community fellowship, so come and enjoy!

I just want to say that the election was met with mixed feelings, but as a community we still have a voice and we still have numbers. We only need to be more motivated and take advantage while we can.

Our dues are greatly needed, now more than ever, so please do what you can to pay them. The Board is working hard to try to make sure that every dollar is used where it is needed the most! Even if you are only able to make a partial payment each month, it helps!

The Christmas Season is right around the corner and with it comes a feeling of joy and a feeling of giving, not just gifts but of love and family. The economy has been hard on all of us, some worse than others, but we all should

try to feel joyful and festive. Amidst all of everything, we still do have reasons to enjoy this time of the year.

Lastly, a Happy Thanksgiving and a Merry Christmas to all of you in "The Park" and beyond!

Molly Eklund-Easley & Dorothy McKnight  
Co-Block Captain Coordinators



**Dorothy McKnight**  
[glynndot@yahoo.com](mailto:glynndot@yahoo.com)



**Molly Ekhund-Easley**  
[scionmee@msn.com](mailto:scionmee@msn.com)



John Fry  
"MASTER PLUMBER"  
Phone # 313-610-5953  
Fax # 313-535-5863

### FRY'S PLUMBING

Quality Work Done With Pride

Licensed and Insured

Remodeling, Additions, New Construction and Service



### "New Lower Home/Auto Rates"

**313/255-9310 ext. 239**

FAX 313/538-5820

Toll-Free 800/222-4416

Claims 800/222-6424

[cmrobinson@aaamichigan.com](mailto:cmrobinson@aaamichigan.com)

Membership • Travel

Insurance • Financial Services

**AAA Michigan**

7800 W. Outer Dr./Ste. 120

Detroit, MI 48235

**Claudette Robinson**

Sales Agent

# Rosedale Park Phoneathons - A Big Success!

## Twenty Strong!

All together about 20 Rosedale Park Block Captains and Board Members pitched in for four weekends and made calls to Rosedale Park residents to offer them a last opportunity to pay their 2010 Dues. Our membership has been declining for the past 4-5 years and it was time to bring our membership back up and our bottom line out of the red if we could.

## One Hundred and Forty Five Hours

We invested about 145 man and woman hours into this endeavor. That is the equivalent of three and a half weeks of a full time, 40 hour a week job, to get those members to join. The work was time consuming but actually very rewarding. 99% of the calls were to appreciative residents who thanked us for the reminder and some took advantage of the "curbside service" we offered where we drove to their homes to pick up their checks for convenience and to save that extra cost of the stamp!

## Eighty to Eighty-Five Members

We ended with approximately 80-85 new or re-enrolled members to RPIA to have a grand total of almost 500 members. This is still short of a majority but it is a good re-start and we are hopeful that all the current members will get ready and start saving that 12 cents a day, and send that check in during the first quarter of next year so we can spend our next Phonathon calling the rest of the 1000 residents to get them to join up too.



## A Thousand Hugs and Kisses

Big thank you to all the residents of Rosedale Park and to the Phonathoners: Lela Baker, Dimitris and Nancy Bitzarakis, Mr. William Brown and Ora Brown, Keith Crosby, Carolyn Cruse, Wanda Edwards, Molly Eklund-Easley, Thom Gatson, Deborah Gore, Denotra T. Jackson, Deborah Kent, Dorothy McKnight, Glynn McKnight, Mary McLeod, Bonnie Mead, Dorothy Roman, Chris Remus, Charles Underwood, Tracy Wallace and Pam Weinstein. Without you folks, none of this would have

been possible.

## Rosedale Park News

Serving a Friendly Neighborhood  
U.S.P.S. 077-610

The official publication of the Rosedale Park Improvement Association (RPIA) is published monthly, except for a combined July/August issue, by RPIA at 14950 Stahelin, Detroit, MI 48223.

### Subscription price:

RPIA Members, \$5.00 per year of \$45.00 annual dues.  
Non-members, \$5.00 per year.

Periodicals Postage paid at Detroit, Michigan.

**Interim Editor:** Bonnie Mead  
[bfmead@prodigy.net](mailto:bfmead@prodigy.net)

**Advertising Coordinator:** Darryl Brown  
313-574-0410 • [advertiserpia@aol.com](mailto:advertiserpia@aol.com)

**Designer:** Lisa Jaeger  
586-909-3573 • [lisajaeger@live.com](mailto:lisajaeger@live.com)

Postmaster: Send address changes to  
Rosedale Park News, PO Box 23113,  
Detroit, MI 48223

Printed by Spartan Forms, Inc.  
24215 Ann Arbor Trail, Dearborn Hts., MI 48127-1712  
313-278-6960



## 2010 Holiday Pancake Breakfast

The RPIA Events Committee is busy preparing for our 2010 Holiday Pancake Breakfast!

This year the Pancake Breakfast will be hosted by both Rosedale and North Rosedale Parks.

The Holiday Pancake Breakfast is Saturday, December 4th from 9 to 11 AM at the North Rosedale Community Center.

For those of you who may not be familiar with it, the Community Center is located north of Grand River on Scarsdale between Glastonbury and Avon. Cost for this year's breakfast is the same as last year -- \$3.00 per person.

Over the years I have been to several of our Holiday Pancake Breakfasts. Many of us talk about how we can better meet our neighbors; the Holiday Pancake Breakfast is a great way!

Last year at the Holiday Pancake Breakfast I happened to be sitting next to newly elected Detroit City Councilman James Tate. (Mr. Tate lives in North Rosedale.) We had a nice conversation; we chatted about the council plus issues in our neighborhood and city.

Besides pancakes and sausage, we will have a sing-a-long with Holiday Carols and a surprise visitor in a red suit who brings gifts for all the children!

Hope to see you there.....  
Chris Remus; RPIA Board member



# RPIA Board Meeting

## Minutes: November 11, 2010

The meeting was called to order at 7:06pm.

The following were present:

Board Members: Deborah Gore, Thom Gatson, Mary McLeod, Darryl Brown, Carolyn Cruse, Chris Remus, Glynn McKnight, Sr., Tracey Wallace, Gregory Westbrook

Administrative Assistant: Priscilla McDonald.

Financial Coordinator: Vicki McLellan.

Interim Newsletter Editor: Bonnie Mead.

### GRDC Representative Renee Kent

Deborah introduced Renee Kent from the GRDC Board. Renee was in attendance to gain approval from the RPIA Board to be re-appointed for another three year team as a GRDC Board member. Renee, along with two other GRDC Board members acts in the interest of Rosedale Park while serving on the GRDC Board. The RPIA must approve her appointment. Renee detailed her background experience that positions her to continue working with the GRDC. Various RPIA Board members then took the opportunity to question Renee as to her qualifications and her future plans with the GRDC Board. Gregory motioned to approve Renee's appointment to continue working with the GRDC Board in the interest of Rosedale Park and Tracey seconded it, all others were in favor. The RPIA Board extended the invitation for Renee to attend other RPIA Board meetings and keep RPIA up to date on what is going on with GRDC and to see where partnerships could be formed between the two groups.

### Financial Summary

Vicki informed the board of the paperwork that needs to be filed with the State Department for the RPIA to renew its position as a functioning non-profit organization. The Board also

discussed the best way to put away the dues received for years 2012 and beyond to make sure they are available in the years they are designated for. The financial committee will explore the situation with the banks and come up with a proposal for the Board to review and decide upon at a later date.

### Financial Committee Recommendation

Carolyn passed around a document that detailed a proposal from the finance committee to the RPIA Board that would resolve the issue of the RPIA needing a new financial coordinator. The Board unanimously motioned and agreed to approve the proposal as it was written which included the migration of RPIA financial data to the online Microsoft Quick Books program, contract with a new financial coordinator, Mr. Pierce Morton; whose credentials were presented to the group, he had previously been interviewed by the finance committee to migrate the data into Quick Books, provide any needed training and consult with the RPIA on financial issues as needed, proposing an increase in the financial duties of the Administrator of Records, transition the financial depositing and check writing responsibilities to the RPIA treasurer, and transition the tax filing responsibilities to Deborah.

### Pancake Breakfast

Chris gave an update on the upcoming Pancake breakfast scheduled for December 4th.

### Next Board Meeting

Thursday, December 9, 2010

Adjournment: 8:00pm

Minutes submitted by: Priscilla McDonald

**Washer & dryer repair since 1980**

**Washer**

**A-1**

**Dryer**

**Service**

**No service charge if repaired.**

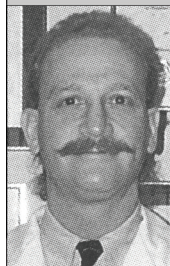
**Servicing most makes & models.**

**Rosedale Park resident.**

**(313)838-1149**

**Dr. Lawrence Rubin**

Diplomate, American Board of Podiatric Surgery



**FOOT & ANKLE SPECIALIST SINCE 1979**

Treating all foot & ankle problems

Medical • Surgical • Orthopedic • Diabetic Care

**18530 Grand River, Detroit • (313) 273-9400**

2 blocks west of the Southfield Freeway

# RPIA General Membership Meeting

## Minutes: November 9, 2010

The meeting was called to order at 7:14pm.

President Deborah Gore opened the meeting introducing our guest speaker, Mr. Victor Judnic, Senior Resident Engineer at MDOT who was in attendance to discuss the M-39 Southfield Freeway improvement project.

### MDOT's M-39 Improvement Project

Residents were shown a 10 minute video presentation detailing the M-39 Southfield Freeway Improvement Project. The video detailed the construction that is set to begin early January 2011 and will improve 14 miles of the freeway between the M-10 Lodge freeway and I-94 Expressway including the service drives and bridges. The project is slated for completion in November 2011. The road between I-94 and Ford Road will be resurfaced. The road between McNichols and the M-10 Lodge freeway will be completely reconstructed meaning that the entire road will be removed including sewers and completely redone. Construction had already been done for the remaining stretch of the freeway and will receive minor maintenance to keep up with the new design standards. MDOT plans to close the freeway during this construction, allowing completion within a 1 year time span as opposed to a 2 year time span which allows for partial closures for daily traffic. MDOT detailed the bridge work, screen walls, service drives, traffic signs, signage, lighting and the improvements being done to each. Questions can be directed to the Detroit Transportation Service Center Offices at 965-6350.

### Nonprofits – Exploring the Universe

Dale Thompson, a resident of Rosedale Park and a teacher of Non-profit Management courses at the University of Michigan spoke on the options available to various types of non-profit organizations, mainly focusing on 501c3 and 501c4 types. He gave the details of what each type can and cannot do and what their purpose for organizing is. The RPIA is considered a 501c4 organization, which acts in the best social interest of a community of people. He explained what non-profits are in operation for and how they can be formed.

### Grandmont Rosedale Crime Alerts

Jeremy Orr, from the Grandmont Rosedale Development Corporation offices, spoke to the residents regarding signing up for crime alerts via the community wide crime alert website. He

encouraged residents to sign up to receive the alerts and keep abreast of what is going on in the community.

### State Representative Harvey Santana

The new State Representative, Harvey Santana, for the Northwest District of Detroit was on-hand to discuss the work that is ahead of him for the next two years in representing the area. He shared his contact information with residents in attendance to voice any concerns that may arise. He urged residents to be patient as he gets acclimated in office and works in our favor with the mainly Republican representatives in office with him. The community in attendance showed their support.

### RPIA Board Elections

The new Board Members for the 2011 year that were voted in by residents at this general membership meeting included: Carolyn Cruse – 2011 President, Pam Weinstein – Second Vice President, Thom Gatson – Treasurer, Deborah Gore – Board Member, Stacey Pugh – Board Member. Thank you to all who took time out to be in attendance and show their support for their community by voting.

Next General Membership Meeting

March 2011

Adjournment: 9:19pm

Minutes submitted by: Priscilla McDonald



# PANDA

*Delicious Chinese Food to Take Out*

*Special Lunch Prices*  
12 Shrimp/\$2.50 every day

OPEN 7 DAYS  
 M-Th 11a-11:30p  
 F-Sat 11a-12:30a  
 Sun 12n-11:30p

In Grandland behind Metro Foodland • (313) 837-3771





## GRANDMONT ROSEDALE DEVELOPMENT CORPORATION

### NEWS FLASH! SHREDDER RETURNS IN DECEMBER!!

Due to several requests for a repeat of the shredding service provided in June, Rosedale Recycles has teamed up with Grandmont Rosedale Development Corporation to sponsor another session of neighborhood-wide shredding.

Start now to collect up all your sensitive documents so you'll be ready to shred them at the December 18th session of Rosedale Recycles. It's quick, it's easy, it's secure and it's FREE!

Contact Rosedale Recycles at [weber@igc.org](mailto:weber@igc.org)



### LOOKING FOR A HOME IN GRANDMONT ROSEDALE?

Calling all prospective homebuyers! GRDC is preparing to renovate several homes in the Grandmont Rosedale area in the coming weeks. If you, or someone you know, is interested in purchasing one of these beautifully updated, energy-efficient and highly affordable homes, call



GRDC's Homeownership Program Manager Brad Mattison today at 313-387-4732, ext. 101.

You can also visit our web site at the link below, to view a few more of GRDC's current renovation projects.

### ATTEND DETROIT CITY CHARTER MEETINGS - LET YOUR VOICE BE HEARD!

During November and December, the 2009-2012 Detroit Charter Revision Commission will host three citizen/stakeholder working sessions to get the best from you for the best in Detroit's future.

The Charter Commission wants to hear from those who will be most impacted by the content of Detroit's Charter. The Commission has scheduled three 2-day conventions for Detroit citizens and stakeholders to give input into the charter. There is still one more opportunity for your input:

#### SATURDAY-SUNDAY Charter Convention #3

Dec 4-5

Saturday 9 AM - 5 PM, Sunday 1-5 PM

Cass Technical High School - 2501 Second Avenue (Midtown)

Since last November, when Detroiters elected nine commissioners to revise Detroit's city Charter, the commission has sponsored 25 meetings across the city of Detroit, informing themselves and Detroiters about key Charter issues, and hearing different perspectives on them--issues such as privatization of public work, the implications of council-by-district, public transportation, removal of elected and appointed officials, planning and economic development, and a variety of other topics that are addressed in the Charter.

The Charter is the document that establishes the powers, duties, and responsibilities of Detroit's elected officials and the city services they are responsible to provide.

For additional information, call the Charter office at 313-628-2517. You may register online at <http://2009drcr.org/default.aspx>.



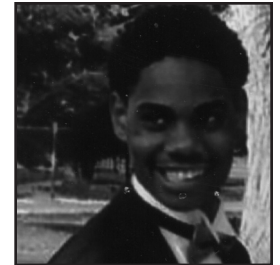
## Congratulations Graduates!

Residents of Artesian from Eaton to Lyndon are celebrating the graduations of the following students:



Chantel Cullors graduated from Communication and Media Arts High School in June, 2010. Her parents are Jerome and Gail Cullors. Chantel is attending Michigan State University and plans to become an anesthesiologist.

Ben-Ra Wright also graduated from Communication and Media Arts High School this June. His parents are Michael and Conja Wright. Ben-Ra is our budding author and playwright. He has performed in the North Rosedale Players production of "How To Eat Like A Child" and with the Mosaic Theatre in their productions of "Woodward Wonderland" and "Crossing 8 Mile." He is currently attending Wayne County Community College and is majoring in Theatre.



Qiana Maria Davis graduated from Wayne County Community College on June 5, 2010, with an Associate of Science degree. Her mother is Doris Davis.

Sebrina Tenny, a younger resident, is a budding poet who graduated from Elementary to Middle School in June of this year. Her poem is entitled "Mom".

Mom

I love you  
 You are the best  
 No one can replace you  
 You always tell me that I can do my best  
 And I love that!

You inspire me to do different things  
 You always love and care for me  
 You are my inspiration  
 I don't know what I would do without you  
 I love you.....for that  
 I hope you realize how much I truly do  
 mnnnnnnnnLOVE YOU!

**Ty and Dy Company**

Serving the Residential & Commercial Community  
 With Quality Building Services  
 313-399-9122    734-658-4208

Fire  
 Wind  
 Water  
 Damage

Tyrone Pearson  
*President*  
 Licensed & Insured

Contact us for all your home improvement needs:

- Kitchen
- Bath
- Remodeling
- Electrical work
- Siding
- Decks
- Roofs
- Plumbing
- Finished Basements
- Concrete Work

313.399.9122  
 734.658.4208  
 Fax: 313.532.1354

Serving Wayne, Washtenaw and Oakland

---



---

## I Was a Renter Too!

---



---

I moved into Rosedale Park in the summer of 1983 after having lived at Freeland and Schoolcraft. I was a single mother with two school aged children and was fortunate enough to have moved among a group of neighbors who rapidly but gently oriented me to the Rosedale Park lifestyle. Within a few weeks of my moving in, my children were invited to participate in the June Day Parade. They were excited, decorated their bikes and won a prize. That was before our block started building floats like the "Jacks in A Box", the "Centennial Birthday Cake" and the "Make My Day" Banner celebrating life in our neighborhood. That was the practice of a joyful life of different people from different groups working together to make life more pleasant, tolerant and inclusive. I wanted my kids to learn those rich lessons.

My neighbors have been excellent teachers and examples. The elderly Vidian couple who lived next door reminded me that marriages and pleasure in your partner can last well beyond fifty years. My son, Michael, remembers that they always talked to and gave cookies to the numerous kids who played across our yards.

Will Jenkins played piano and lived life with robust warmth. Alex and Cynthia Marshall loved all the children and taught good manners, as well as fair play. The husbands kept the boys involved in sports. John Spencer took the boys bicycle riding and to rites of passage groups at Fellowship Baptist Church.

Cynthia Marshall and Sherry Spencer would stand on the sidewalk talking while watching the children play and invited me to join in the planning of activities.. The children went to Vacation Bible School, the Calvin Outpost - where they learned new things and had fun sledding, swimming, playing soccer, baseball and many other games. We have shared the hardships of deaths, illnesses and divorces while attempting to comfort each other.

I remember the time my boss gave my son a guinea pig and the others all wanted one too. The parents were supportive and tolerant. That began a period of guinea pig races down the driveways!

Our block parties were spiced with story telling and jokes by the unicycle riding antique car collecting Santoni family and Harry Cook who wrote for the Detroit Free Press. During a 30 Block Garage Sale I bought a George Washington bed from the O'Donnells who had two sons, Jacob and Bryan. Michael told me that Jacob went to College in Chicago. I remember best the younger one who asked me questions about Black people and once searched my refrigerator looking for something to drink. He had a haircut that reminded me of the Roundheads of England.

At times I have felt unsure of myself and my contribution to this community. But as I became more involved and owned responsibility for the progressive dreams of this community, I began to pay dues, go to general meetings, and ask how I could help in some community efforts. I became more vocal about issues, particularly Vetal School. I bought art at The Grandmont Fair. I auditioned and was in a Christmas play at the Rosedale Players. I met a wonderfully alive Betty Mosher. I started a book club that continues 'till this day which introduced me to a wider range of writers.

In 1984, I bought a house about one block away from where I had rented. I have been a part of Rosedale Recyclers, Support the Thursday Market, attended General Membership Meetings and have assisted with the Community Garden. I support my block captains in any way I can and invite people to get involved. I have met all of my neighbors and know most of the kids in response to efforts made by my block captains, Dorothy McKnight and Molly Eklund Easley. I am a homeowner now because this community stimulated and nurtured a dream of cooperation and tolerance. This is an excellent standard. Whether named or not, you have been a part of my experience. Let's all pledge to communicate and help maintain these good standards with a welcoming, triumphant spirit

My name is Carolyn Akpe and I continue to enjoy my life on Artesian..



## Rosedale Recycles



Rosedale Recycles continues as a recycling drop off site for ALL of the following items on the third Saturday of each month, from 10 am-2 pm, in the parking lot behind Christ the King Church, at Pierson and Grand River Avenue:

- paper (glossy, newsprint, office, shredded)
- cardboard (corrugated and boxboard)
- glass bottles and jars (all colors)
- metals (all kinds)
- plastics (#s 1,2, 4, 5, 6, & 7. NOT 3)
- Styrofoam, milk cartons, batteries.

If you live in the pilot area for curbside recycling, FIRST fill your blue-lidded (recyclables) Courville container with paper (glossy/newsprint/office/shredded), metals, cardboard and plastics 1, 2, 4, 5, 6, & 7. THEN, bring other recyclables to Rosedale Recycles

and meet up with your neighbors outside the pilot!

Several of us will be going door to door within the pilot area to encourage participation. If you would like to assist, let us know. You can contact us at [weber@igc.org](mailto:weber@igc.org) or 313-272-5820.



### Car insurance with **PERSONAL SERVICE.** No extra charge.

At State Farm® you get a competitive rate and an agent dedicated to helping you get the coverage that's right for you and the discounts you deserve. Nobody takes care of you like State Farm. Contact me. I'll prove it.



**Theodore C Brown Ins Agcy Inc**  
Theodore Brown, Agent  
Southfield, MI 48076-2564  
Bus: 248-352-4757

LIKE A GOOD NEIGHBOR, STATE FARM IS THERE.®  
*Providing Insurance and Financial Services*

State Farm Mutual Automobile Insurance Company • State Farm Indemnity Company  
P040201 05/05 Bloomington, IL • [statefarm.com](http://statefarm.com)®

Additions.Kitchens.Garages Vinal Siding & Aluminum Trim  
Replacement Windows.Doors.Roofing

### BG & SON HOME IMPROVEMENTS 734-420-2819

**Bob Grutza**  
734-216-5943

**Brian Grutza**  
734-564-7679

Licensed & Insured

Visa/Master Card accepted

[BGHomeimprovement@gmail.com](mailto:BGHomeimprovement@gmail.com)

United States Postal Service (Form #3526)  
Statement of Ownership, Management, and Circulation

- 1) Publication Title: Rosedale Park News
- 2) Publication Number: 077-610
- 3) Filing Date: 11-1-2010
- 4) Issue Frequency: Monthly (with combined July/August issue)
- 5) Number of Issues Published Annually: 11
- 6) Annual Subscription Price: \$5.00
- 7) Complete Mailing Address of Known Office of Publication (not printer): 15000 Glastonbury, Detroit, MI 48223-3605
- 8) Complete Mailing Address of Headquarters or General Business Office of Publisher (not printer): Rosedale Park Improvement Association, PO Box 23113, Detroit, MI, 48223
- 9) Full Names and Complete Mailing Addresses of Publisher, Editor, and Managing Editor: Publisher is Debbie Gore, 15000 Glastonbury, Detroit, MI 48223. Editor is Lisa Jaeger, 13640 Iowa, Warren, MI 48088. Managing Editor is Bonnie Mead, 14804 Piedmont, Detroit, MI 48223.
- 10) Owner: Rosedale Park Improvement Association, PO Box 23113, Detroit, MI 48223
- 11) Known Bondholders, Mortgagees, and Other Security Holders Owning or Holding 1% or More of the Total Amount of Bonds, Mortgages, or Other Securities: None
- 12) Tax Status: The purpose, function and nonprofit status of this organization and the exempt status for federal income tax purposes: Has not changed during the preceding 12 months
- 13) Publication Title: Rosedale Park News
- 14) Issue Date for Circulation Data Below: September, 2010
- 15) Extent and Nature of Circulation:
- a) Total Number of Copies (Net Press Run): Average Number of Copies Each Issue During Preceding 12 Months: 750. No. Copies of Single Issue Published Nearest to Filing Date: 736
- b) Paid Circulation (By Mail and Outside the Mail):
- (1) Mailed Outside-County Paid Subscriptions Stated on Form 3541 (Include advertiser's proof and exchange copies): Average No. Copies Each Issue During Preceding 12 Months: 2; No. Copies of Single Issue Published Nearest to Filing Date: 2
- (2) Mailed In-County Paid Subscriptions Stated on Form 3541 (Include advertisers proof and exchange copies): Average No. Copies Each Issue During Preceding 12 Months: 695; No. copies Single Issue Published Nearest to Filing Date: 711
- (3) Paid Distribution Outside the Mails including Sales through Dealers and Carriers, Street Vendors, Counter Sales and other USPS Paid Distribution: Average No. Copies Each Issue During Preceding 12 Months: 0; No. copies Single Issue Published Nearest to Filing Date: 0
- (4) Paid Distribution by Other Classes of Mail Through USPS: Average No. Copies Each Issue During Preceding 12 Months: 0; No. copies Single Issue Published Nearest to Filing Date: 0
- c) Total Paid Distribution [Sum of 15b, (1), (2), (3), and (4)]: Average No. Copies Each Issue During Preceding 12 Months: 698; No. Copies of Single Issue Published Nearest to Filing Date: 713
- d) Free or Nominal Rate Distribution (By Mail and Outside the Mail) [Samples, complimentary, and other free]:
- (1) Outside-County as Stated on Form 3541: Average No. Copies Each Issue During Preceding 12 Months: 3; No. Copies of Single Issue Published Nearest to Filing Date: 3
- (2) In-County as Stated on Form 3541: Average No. Copies Each Issue During Preceding 12 Months: 21; No. copies Single Issue Published Nearest to Filing Date: 20
- (3) Mailed at Other Classes through the USPS (e.g. First-Class Mail): Average No. Copies Each Issue During Preceding 12 Months: 0; No. copies Single Issue Published Nearest to Filing Date: 0
- (4) Outside the Mail (Carriers or other means) [Advertising, Board of Directors, Archives, New Neighbors]: Avg. No. Copies Each Issue During the Preceding 12 Months: 23; No. copies Single Issue Published Nearest to Filing Date: 20
- e) Total Free or Nominal Rate Distribution (Sum of 15d (1), (2), (3), and (4)): Average No. Copies Each Issue During Preceding 12 Months: 47; No. Copies of Single Issue Published Nearest to Filing Date: 43
- f) Total Distribution (Sum of 15c and 15e): Average No. Copies Issued During Preceding 12 Months: 745; No. copies of Single Issue Published Nearest to Filing Date: 756
- g) Copies Not Distributed: Average No. Copies Issued During Preceding 12 Months: 10; No. copies of Single Issue Published Nearest to Filing Date: 10
- h) Total (Sum of 15f and 15g): Average No. Copies Issued During Preceding 12 Months: 755; No. copies of Single Issue Published Nearest to Filing Date: 766
- i) Percent Paid (15c divided by 15f times 100): Average No. Copies Issued During Preceding 12 Months: 94%; No. copies of Single Issue Published Nearest to Filing Date: 94%
- 16) Publication of Statement of Ownership: [x] Publication Required. Will be printed in the December, 2010 issue of this publication.
- 17) Signature and Title of Editor, Publisher, Business Manager, or Owner: Mary McLeod, Business Manager, Date: 11-2-2010

I certify that all information furnished on this form is true and complete. I understand that anyone who furnishes false or misleading information on this form or who omits material or information requested on this form may be subject to criminal sanctions (including fines and imprisonment) and/or civil sanctions (including civil penalties).



## Dues Collection Phoneathon a Great Success!

Rosedale Park block captains, board members and other concerned residents gave the gift of their time on four weekend evenings in October and November to telephone neighbors to encourage the payment of RPIA dues for the year 2010. The overwhelming majority of persons with whom they spoke expressed gratitude for the reminder and agreed to support the Association. Some checks were picked up at homes on the day of the call, others were hand delivered to block captains or mailed to the RPIA P.O. Box 23113, Detroit 48223.

Regular communication among all members of our community builds a strong sense of ownership and pride in Rosedale Park. In these times of economic distress and uncertainty, it is even more vital that we reach out to each other and develop bonds that strengthen us all. It was wonderful to be able to boost our dues collection so that we can continue to provide the street snow plowing, neighborhood activities and the Rosedale Park News publication. At the same time, the opportunity to talk to our neighbors renewed the sense of shared determination to continue to proclaim: City living is great. It's best in Rosedale Park!

## Don't Forget Your SNOWMAN!

We sweep while you sleep.

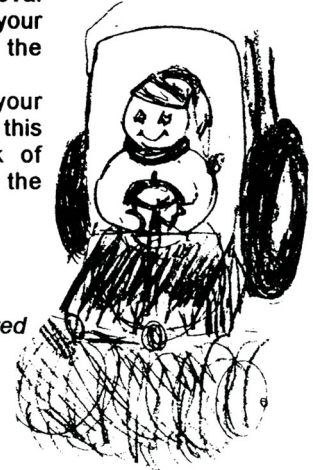
Sidewalk snow removal is not paid for by your Association or by the City.

Some blocks in your community have lost this service due to lack of support. Keep the sidewalks clear!

**Send your payment today.**

*If you have not received a bill for this service, please call for information.*

RPIA member.



Member  SRA — Snow Removers Association

**G.S.I.**

**greener still, inc.**

Licensed  
and Bonded

**Your Snow Removal Service**

19119 Schoolcraft, Detroit, MI 48223

**838-4500**

## Election Results!

The vote is in and the membership has spoken. Below are the results of your choices. Thank you for showing your concern by taking the time to participate.

### ELECTION 2011 R.P.I.A. BOARD OFFICERS

President: Carolyn Cruse

1st Vice President: Gregory Westbrooks

2nd Vice President: Pam Weinstein

#### Board Members:

Darryl Brown

Tom Gatson (Treasurer)

Deborah Gore

Glen McKnight

Mary McLeod

Stacy Pugh

Chris Remus

Tracey Wallace



Next, join us on January 28, 2011 for the annual banquet and swearing in ceremony. It's time for fun, meeting neighbors and other RPIA residents.

## Lost Cat Found!

*by Jamie Sperl*

In the October/November issue of the Park News, I placed an ad seeking help finding my lost female cat, Peti. I am gratefully letting the residents of Rosedale Park know she was located on November 11, 2010 and is now home and recovering from her 10 week adventure.

I want to thank the residents of Faust between Eaton and Chalfonte, especially Pam and Jim who saw her in their yard and realized that the skinny, matted cat was Peti and called me, and to Glenn and Rose, their neighbors, who had seen her several times in their yard and worked with me on capturing her.

I also want to thank Tom and Adrienne on Glastonbury between Eaton and Lyndon who kept watch to see if Peti showed up with the strays they see on a regular basis, Nancy Bitzarakis and Mary McLeod of the RPIA board, the staff of the Rosedale Park News and the residents of the Park who took the time to speak with me, look at my flyers and call if they saw a cat that could have been Peti. A big thank you to Chris Ridgway of North Rosedale who has

done animal rescue for several years. She encouraged me not to give up and to keep actively looking.

I want to comment on how well- mannered and concerned our middle and high school age residents are. For all the negative instances we hear or read about the young people in our city, the ones I spoke with were good examples for others to follow.

Although this incident started with very negatively (my home was invaded in the early morning hours while I was asleep), just walking throughout Rosedale, Grandmont 1 and Grandmont restored my belief in our community and my faith in our neighbors. I have had a great number of people contact me since last Thursday to let me know how happy they were to hear I found Peti.

We need to pay attention to what is going on, whether it is looking out our windows if we hear a strange noise, going to the monthly Neighborhood Safety meeting with our district police officers or becoming involved with the CB Patrol (something I plan on doing after January 1st).

Al Baumgardner Co-Owner	Jim Baumgardner Co-Owner
<h3 style="margin: 0;">Baumgardner Mechanical, Inc.</h3> Heating, Cooling, Plumbing & Electrical 24850 W. McNichols • Detroit, MI 48219	
Licensed & Insured #71-04661	313-537-1600

## Rosedale Veterinary House Calls

---

**Andrew A. Benigna, D.V.M.**  
Park Resident

**Surgery ♥ Hospitalization ♥ Emergency Services**  
Call 328-8110

RPIA 2010 DUES PAYMENT FORM	
NAME	
ADDRESS	PHONE
EMAIL	
Yes, I want to <i>due</i> my part in keeping our neighborhood thriving. Enclosed please find my check or money order for the following:	
RPIA 2010 Resident Dues	\$45.00
RPIA 2010 Outer Drive Resident Dues*	\$25.00
Total Enclosed	
<p><b>* Outer Drive Residents have a lower rate because their street plowing is provided by Wayne County, not RPIA.</b></p> Make check or money order payable to RPIA and mail payments to: RPIA, Administrator of Records PO Box 23113 Detroit, MI 48223	

**RPIA CONTACT LIST – 2010**

**OFFICERS**

**President**

Deborah Gore  
15000 Glastonbury  
313-838-3243  
Debbie\_gore@msn.com

**First Vice President**

Gregory Westbrooks  
15090 Glastonbury  
313-493-5691  
gregorywestbrooks@sbcglobal.net

**Second Vice President**

VACANT

**Treasurer**

VACANT

**BOARD OF DIRECTORS**

Carolyn Cruse  
blkreader@sbcglobal.net

Chris Remus  
chrisremus@sbcglobal.net

Darryl Brown  
mrdarrylbrown@aol.com

Glynn D. McKnight Sr.  
glynnndot@yahoo.com

Mary McLeod  
15075 Rosemont  
marytmcleod@aol.com

Thom Gatson  
tdgatson@sbcglobal.net

Tracey Wallace  
14551 Glastonbury  
313-837-5052  
twallace2005@aol.com

Molly Ekhund-Easley  
scionmee@msn.com

**Financial Administrator**

Vicki McLellan, CFP(R)  
15110 Warwick  
vicki5555@juno.com

**New-Neighbor Kit Coordinator**

Bill Nolan  
313-838-9035  
sweetgrass59011@gmail.com

**RP Interim News Editor**

Bonnie Mead  
bfmead@prodigy.net

**RP NEWS Advertising Director**

Darryl Brown  
advertiserpia@aol.com

**RP NEWS Layout Designer**

Lisa Jaeger  
lisajaeger@live.com

**CONTRACTORS & KEY CONTACTS**

**Administrative Assistant**

Priscilla McDonald  
pamcdonald@live.com

**Administrator of Records**

Adrienne Wright-Lawrence  
adwldraw@aol.com

**Block-Captain Coordinators**

Dorothy McKnight  
glynnndot@yahoo.com

**RPIA MESSAGE HOTLINE  
313-927-1089**

**Home Health Care**

Provided by



Mrs. Myrtle Colley  
30 years experience  
New Rosedale Pk. Resident  
313-397-7729

Preventive  
General Dentistry  
For Good Oral Health



*Michael C. Hudgins D.D.S.*

19001 Grand River Ave.  
Detroit, MI 48223  
313 838-6679

## TOP HAT CONSTRUCTION

**FREE ESTIMATES • SENIOR DISCOUNTS**

<p><b>ROOFING</b> New Roofs Re-Roofs Tear-Offs Valleys Repaired Shingle Wood Repairs Asphalt Shingle Fiberglass Shingle 3 Tab or Dimensional Flashings All Type Roof Repairs</p>	<p><b>FLAT ROOFS</b> New Roofs Tear-Offs Re-Covers Torch Applied Rubber All Leaks Repaired</p>	<p><b>SIDING</b> Vinyl Siding Aluminum Trim Soffits Siding Repairs</p>
--	--	--

**CHIMNEYS / PORCHES**  
Full Replacement  
Brick Replacement  
Tuck Pointing  
Wash Collars  
Chimney Liners  
Bricks Cleaned  
Chimneys Cleaned

MEMBER SOUTHEAST MICHIGAN BETTER BUSINESS BUREAU  

See Our Ad In The  
  
SBC Yellow Pages  
or On The Internet at  
tophatcontracting.com

**ALL WORK GUARANTEED • LICENSED & INSURED**

TOP HAT CONSTRUCTION

### FREE GUTTERS

With Any New Roof

Limited Time Offer

TOP HAT CONSTRUCTION

### 10% OFF ANY GUTTERS

Select From 30 Color Choices

Limited Time Offer

FAMILY OWNED & OPERATED

# 313-383-4096

Rosedale Park Improvement Association  
PO Box 23113  
Detroit, MI 48223  
313-927-1089

Interim Editor: Bonnie Mead  
bfmead@prodigy.net

---

---

## December 2010

### CALENDAR OF EVENTS

#### December

Monday Courville trash collection  
Dec. 1 Ad copy deadline, Jan. *RP News*  
Dec. 9 RPIA Board Meeting  
Dec. 10 Article deadline, Jan. *RP News*  
Dec. 18 Rosedale Recycles & Paper Shredding

#### Upcoming Events

Jan. 28  
2011 RPIA Annual Banquet



### ROSEDALE RECYCLES

Saturday, Dec. 18

10 a.m. - 2 p.m.  
18605 Pierson St.

**City living is great.  
It's best in  
Rosedale Park!**