



Department of
Public Works

5800 Russell Street, Detroit • 313-876-0426

Collection is every other week

YARD WASTE – leaves, grass clippings, shrubs and twigs – will be collected every other week on your scheduled collection day. Place your yard waste at the curb for collection **by 7 a.m. but no more than 24 hours in advance.** Yard waste is collected with a separate truck.

If you are unsure about your collection date, bulk collection limit or have any questions, please call your solid waste provider or go to www.detroitmi.gov/PublicWorks.

To sign up for weekly reminders, text your street address to **(313) 800-7905**.



What you need
to know about

YARD WASTE COLLECTION

To properly dispose of yard waste:

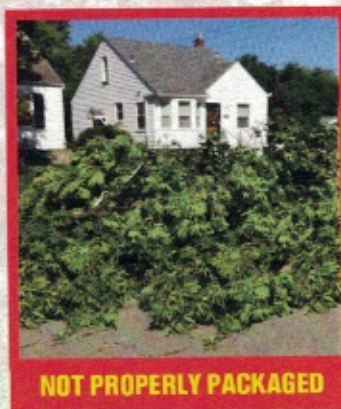
- Only use paper, biodegradable lawn/yard bags or your own 32-gallon reusable plastic or metal container, which must be marked Yard Waste Only. The weight restriction on a 32-gallon container is 60 pounds. **NO PLASTIC BAGS will be collected.**
- Do not place yard waste in your refuse container.
- Twigs or branches less than 4 feet in length or 2 inches in diameter may be placed in yard waste bags.
- Brush in excess of 2 inches in diameter should be tied and placed at the curb. Bundles should not be more than 4 feet in length, weigh more than 60 lbs, or be more than 18 inches in diameter. Leaves should be placed in biodegradable yard bags.



To be a good neighbor

- Do not store your refuse or recycling can in the front yard
- Your container is only allowed at the curb from 6 p.m. on the day before collection and shall be removed not later than 9 p.m. on the day of collection
- Do not place bulk debris in front of another structure or in front of a vacant lot. Place your bulk items in front of your household only.
- Do not mix yard waste, recyclables and/or refuse

Failure to comply with any of these requirements can result in a ticket being issued.



NOT PROPERLY PACKAGED

The City of Detroit is reminding residents of the guidelines regarding bulk collection. Bulk items will be collected on your scheduled bulk collection day every other week.

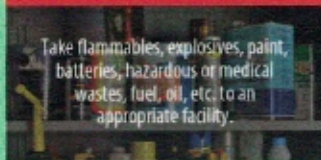
Place bulk items at the curb away from your refuse container, yard waste or recycling, by 7 a.m. on the scheduled day of collection, no more than 24 hours in advance.

These items are NOT considered bulk items and should not be placed at the curb:

REMODELING OR CONSTRUCTION DEBRIS



HOUSEHOLD HAZARDOUS WASTE



Take flammables, explosives, paint, batteries, hazardous or medical wastes, fuel, oil, etc. to an appropriate facility.

What you need to know about **BULK COLLECTION**

Bulk items include **Furniture, mattresses, appliances, hot water tanks, carpeting and large toys.**



BULK ITEM REQUIREMENTS

Two cubic yards is about the size of two stoves.

Smaller items (clothing, toys, lamps, etc.) should be placed in plastic bags or boxes.

Carpeting should be rolled in bundles of no more than 4 feet and tied.

Place bulk items only in front of your household. Placing your bulk items in front of vacant lots or houses can result in a ticket being issued.



If you have more than 1,000 pounds or two cubic yards in bulk items, here is what you should do:

- 1) Use the pickup service provided by the Department of Public Works. DPW will come out and give you an estimate on the cost of disposing of your bulk items. Call **(313) 876-0049**.
- 2) Rent a roll-off container from a private vendor and dispose of your items in that container.

You may take bulk items, yard waste or recycling to one of these bulk drop-off locations

- **Davison Yard** / 8221 West Davison
- **Southfield Yard** / 12255 Southfield Rd.
- **J. Fons Transfer Station** / 6451 E. McNichols

Detroit residents with proper identification may use the drop-off locations but are limited to 1,000 pounds per person per day. No construction debris accepted.

To report a missed collection, please contact:

East Side and Southwest Detroit, GFL, 1-866-772-8900
West Side Advanced Disposal 1-844-233-8764
Illegal Dumping/ Excessive Debris: 313-876-0426

FAILURE TO COMPLY CAN RESULT IN FINES • Bulks items totaling more than two cubic yards or weighing more than 1,000 pounds will not be collected, and the homeowner will be subject to a fine of up to **\$1,500** for first offense and up to **\$10,000** for fourth offense.